

# Watts Cooking And Watts For Sale



**BRUNSWICK  
ELECTRIC**   
Membership Corporation

A Touchstone Energy® Cooperative 

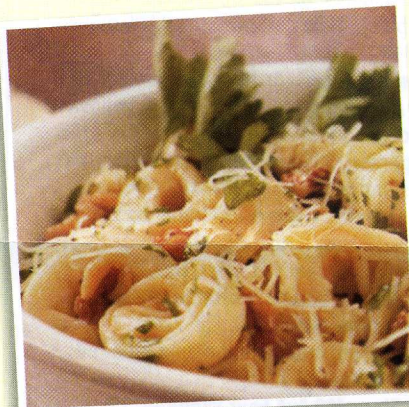
FOR THE MEMBERS OF BRUNSWICK EMC

JUNE 2009

## Nutty Cheese Tortellini

1 package (9 ounces) refrigerated  
cheese tortellini  
1/2 cup butter, cubed  
1/2 cup minced fresh parsley  
1/3 cup chopped walnuts, toasted  
1/4 cup shredded Parmesan cheese  
Coarsely ground pepper

Cook tortellini according to package  
directions; drain. In the same pan,  
melt butter. Stir in the tortellini,  
parsley and walnuts; toss to coat.  
Sprinkle with Parmesan cheese and  
pepper. Serve immediately.

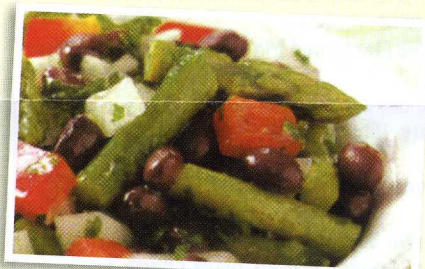


## Black Bean Asparagus Salad

2 pounds fresh asparagus, trimmed  
and cut into 1-inch pieces  
4 cups water  
2 cans (15 ounces each) black beans,  
rinsed and drained  
1 large sweet red pepper, chopped  
1 medium sweet onion, chopped  
3/4 cup minced fresh parsley  
1/4 cup olive oil  
2 tablespoons lime juice  
1/8 teaspoon salt  
1/8 teaspoon pepper

In a Dutch oven, bring asparagus and  
water to a boil. Reduce heat; cover  
and simmer for 4-5 minutes or until  
crisp-tender. Rinse in cold water;

pat dry. In a large bowl, combine the  
asparagus, beans, red pepper, onion  
and parsley. In a small bowl, whisk  
the oil, lime juice, salt and pepper.  
Pour over vegetables and toss to  
coat. Cover and refrigerate for at  
least 2 hours before serving.



**Tips to help you  
save \$ and energy**

### Think "efficiency" when buying appliances.

- ▶ Buy the right size. Remember, bigger doesn't  
always mean better!  
—Consider your family's needs and habits.  
—Buy the appliance that offers the  
performance you need without using extra  
energy.
- ▶ Compare efficiency ratings. The  
ENERGYGUIDE label gives information on  
energy efficiency and operating costs.  
Compare the ratings on models of the  
same size. Also, ENERGY STAR appliances  
significantly exceed minimum government  
energy-efficiency standards.
- ▶ Consider special features carefully. Some  
features raise purchase price and operating  
costs, while offering few benefits. Look  
for features that save energy—and pay for  
themselves over time.



### Safety Tip

#### Electrical Safety for Outdoor Kids:

- ▶ Make sure children use kites and balloons in  
open areas. Electricity can travel down the  
strings if they contact power lines. Always  
keep metallic balloons indoors, as they are  
especially conductive.
- ▶ Teach children to stay away from power  
lines and substations and make sure they  
can recognize "Danger-High Voltage" signs.
- ▶ Don't let children climb trees near power  
lines.

### HOLIDAY CLOSING NOTE:

BEMC offices will be closed Friday, July 3 to celebrate Independence Day.

WEBSITE: [www.bemc.org](http://www.bemc.org)  
E-MAIL: [info@bemc.org](mailto:info@bemc.org)  
OUTAGE REPORTING: 1-800-682-5309

**CUSTOMER SERVICE:**  
Toll Free: 1-800-842-5871  
Shallotte: 910-754-4391  
Southport/Oak Island: 910-457-9808  
Whiteville: 910-642-5011

Use the BPTs at these convenient locations to pay your electric bill or purchase energy for your PowerStat card:

**24 hrs a day/ 7 days a week**  
**BEMC Headquarters:**  
795 Ocean Hwy W (Hwy 17), Supply  
**BEMC Oak Island Office:**  
4335 Southport-Supply Rd (Hwy 211)  
**BEMC Whiteville Office:**  
2228 New Britton Hwy E (Hwy130)

**NAKINA—Fowler's Supermarket**  
Hwy 904 / 6am-9pm Mon-Sat;  
9am-9pm Sun

**CHADBURN—Hasty Mart**  
Hwy 410N / 24 hrs/ 7 days

**WINNABOW—Handee Hugo,** 6170  
Ocean Hwy (Hwy17) / 6am-11pm / 7 days  
**SHALLOTTE—Scotchman** (next to  
Wendy's on Hwy 130) / 24 hrs / 7 days  
**SUNSET BEACH—Market Express**  
1798 Seaside Rd / 7am-10pm / 7 days



We're happy to provide this **FREE** service for BEMC members. **Please note the following:**

- FOR SALE ADS ONLY (no rentals, no items wanted, no commercial ads)
- ADS LIMITED TO THREE LINES (About 20 words), including telephone #
- We do not print email addresses or names.
- All ads run **ONE TIME ONLY, AS SPACE PERMITS** and are subject to editing.

- ONE AD PER MEMBER PER MONTH. NO REPEATS PLEASE!** May combine several items into one 3-line ad.
- Please print clearly and be sure to include your telephone number.
- See bottom of page for how to submit your ad.

FOR THE MEMBERS OF BRUNSWICK ELECTRIC MEMBERSHIP CORPORATION

**Wheelchair vehicle ramp**, 2" hitch, \$250. 740-1474.  
**'00 F250 Power Stroke DSL**, good fuel mileage, under 100,000 miles, \$9,000. 842-1904.

**Bistro set**, 30" round table, 4 chairs, black wrought iron/wood, \$150. 399-5861.

**Pressure washer**, 2400 psi, 5.0 hp, Honda engine, \$250. 579-1864.

**Boat slips**, dry, Ocean Isle Beach Marina, 579-7295.

**'05 Harley Davidson**, Low Rider, \$12,000; '03 Coleman pop-up camper, \$4,000; '98 Plymouth Grand Voyager, \$2,500. 642-4482.

**'90 Toyota Camry**, 4dr, \$2000; vacuum cleaner, \$10; golf bag, \$25; Grey/white tabby kittens, spayed, neutered, shots, 579-4448.

**B&S engine**, 5hp, horizontal type; Mathis tiller. 253-5785.

**Frigidaire commercial freezer**, frost free, stand up, 64x32. 393-9712 or 842-7934.

**2BD/1BA house**, stick built, on 2 lots, \$65,000. 754-6247.

**Bay Pointe bicycle**, 3 speed, 26", \$45. 579-9297 between 3-5pm only.

**'83 Ford XLT**, 4x4, 302 automatic, 36" tires, \$1,800. 827-0974.

**Hess Collectible Trucks**, years '03-'09, in original boxes, unopened, 523-2491 or 201-4272.

**3BD house**, Carolina Shores, ceiling fans throughout, gas fireplace, hurricane shutters, water filter, beach shower in garage. 579-2048.

**Pro-form bike exerciser**, console w/smart programs, user manual, \$50. 579-8961.

**Urban compost tumbler**, UCT-9, holds up to 125 lbs, assembly instructions included, \$150. 579-0976.

**China**, dinner service for 10, classy simple pattern, 59 pieces, \$95. 253-4168.

**Craftsman 5hp chipper/shredder**, \$150; Craftsman 5.5hp self-propelled mower, \$125. 579-0812.

**Gulbransen organ**, plays all instruments, surround sound, 457-4415.

**'99 Honda Accord**, EX-V6, leather, 62,200 miles, new tires, \$8,995 OBO. 842-7545.

**'95 Pathfinder**, green, low mileage, 579-4973.

**3BD/3BA Townhome**, 24/7 security, 2 car garage, many amenities, \$289,900. 233-1443.

**27" Sanyo TV**, \$150; Solid handcraved wood entry table/vanity, \$350; swivel desk chair, \$20, 470-9238.

**Sears 10" table saw**, 10" radial saw; band saw, sanders, grinders, router, drills, socket wrenches; 10" alum boat. 579-7835.

**Toddler bed**, Step 2 brand, fire engine boy's bed w/mattress, \$110. 340-2254.

**Whirlpool washer/dryer**, super capacity, 2 yrs old, top of line, \$500 OBO. 575-2751.

**Bridge table/chairs**, \$30; Lg medicine cabinet/mirror, \$40; Singer sewing machine/cabinet, \$75; 3 lg mirrors, \$35 each. 575-6225.

**3 Trailers on 3 acres**, in the mountains, near Asheville, NC, large trout creek, \$140,000. 828-626-3888.

**White bedroom dresser** with 6 drawers. \$125. 919-841-1900.

**'89 Nissan Pickup**, w/camper shell, low miles, 5 speed manual, 4 cyl. \$1,200. 253-8075 after 6 pm.

**Huffy 18 speed Outlaw bicycle**, good for church group; 40 pint dehumidifier, \$20. 253-8662.

**'00 BMW Z-3**, black, 65,450 mi, \$10,995; '98 Harley Davidson, black, 1200 cc Sportster, 7,500 miles, \$4,500. 253-8442.

**Set Westen step bars**, for Toyota Tacoma 4 door truck, 100; AKC registered lab puppies, yellow, great bloodline, shots done, \$250 firm. 840-4165.

**LA Spa**, 3 person, 29 jets, 180 gal. ozonator, two 5HP pumps, indoor kept, \$1,999. 287-1889.

**1921 Packard 4dr. Pheaton**, w/aluminum body by Pullman, only 6 known to exist, very rare, very good shape, make realistic offer, 200-7053.

**Mission oak entertainment center**, lots of CD/DVD/VHS storage, \$495 OBO. 755-7288.

**2 lots**, one lot with mobile home, one wooded, near Ash, NC. 828-656-2235.

**'05 Suzuki Eiger 400 4x4 Four Wheeler**, 1,041 miles, 2,500lb, warn winch, \$4,500. 234-0808.

**Shelving Wood**, 2'x8' & 2'x6' pine boards, 1/2 inch plywood sheets, Wainscot interior sheets, 575-4335.

**Dehumidifier**, Emerson Quiet Kool, 40 pt 2500 sq ft, electronic, on casters, humidistat, overflow shutoff, filter, 22"hx14"wx16"d, \$80. 201-1371.

**Queen size sleeper sofa**, \$325; wall hugger sofa with end recliners. \$350. 575-3999.

**'94 Mazda B4000 V6 LE pickup truck**, Runs good \$1500. 933-9206.

**22" quilting hoop**, with floor stand by Hinterberg Design, never used, \$100. 842-7176.

**'02 Jayco Pop-up camper**, showroom new, sleeps 6 \$3000; Pathfinder canoe, \$300. 579-9084.

**Boats (2)**, 16 ft, 40hp & 25hp, trailers, \$1500 and \$900. 933-9212.

**3BD/2BA '08 Fleetwood Mobile Home**, 14x70; '99 Mazda B400, V6, 4x4, fully loaded, extended cab w/toolbox, 641-2664 or (919) 616-7519.

**'06 Mercury**, 15hp 4-stroke, electric start, \$1600. 770-3585.

**Sofa & loveseat**, 84" Wine color, Ital leather, \$750. 579-6073.

**38 inch Lawn Sweeper**, \$100. 575-5156.

**'06 Harley Springer Softtail**, black cherry & chromed, 6,000 miles, service contract, \$14,700. 575-2131.

**3BD/1.5BA singlewide**, built on addition, Holden Beach, 1/2 mile to bridge, \$49,900. 520-3839.

**Kimball Sonota cherry piano**, storage bench, 57l, 22w, 42h, \$2,000. 579-0638.

**Oakwood dresser**, w/large mirror, 6 large & 2 small drawers, \$300; Brass headboard, twin bed, new mattress, \$75. 457-4784.

**Bridal Gown**, size 14, Ivory/Champagne, David's Bridal Style T9612, wore once \$500; cement steps for mobile home, \$75. 653-5442.

**Daylilies & Bearded Irises**, \$5, Whiteville, 642-4725.

**Large Penns. House Cherry B/R set**, queen bed, 76" chest, armoire, bedside table, \$350. 457-0846.

**Remington Premier 1187 12 gauge automatic shotgun**, 28" Rem choke/vent rib barrel, best offer over \$425. 575-3616.

**LA Spa**, Allure III, 62" X 82" X 30", 180 Gallons, 29 jets, two-5hp pumps, 240V, redwood cabinet, indoor kept, \$1799. 287-1889.

**Treadmill**, \$150; Ultra Ab Lounge, \$50; Marcy Workout Station, \$150; buy one or all, 880-9286.

**Ping Pong table**, new, fold-up type. \$75. 575-6080.

**'05 GE 18cu.ft top-freezer refrigerator**, white, \$200 OBO, 575-4211.

**Man's Marin Mountain bike**, \$500; William Mangum print w/certificate, "Cape Hatteras", \$500. 278-9564.

**'57 Farmall Cub tractor**, 100% restored, 8 coats paint, rebuilt motor, all attachments, \$5,700. 842-5186.

**Spanish side by side 12 ga 3" mag**, \$450; Krieghoff o/u 30" w/chokes, \$2,950; Browning pump, 12 ga mag, \$450; Cherry dining table w/6 chairs \$400. 367-9129.

**3.5 acres+**, across from Tire Barn on Chadbourn hwy, water and sewer available, \$29,900 471-1024.

**'02 Mazda Miata**, conv, auto tran, ac, 29K mi., garaged, \$9975. 754-6856.

**'90 Toyota Camry**, \$2,000. 579-4448, leave message.

**'98 Dodge Intrepid**, blown head gasket, \$950 OBO, 664-0095.

**45 white scalloped edging**, 24" long, 50 cents each; Kodak Easy Share CD 40 digital camera, w/256 mb memory card, \$35 firm. 471-0035 after 5pm.

**Railroad ties**, 6 1/2 ft. long, \$10 each; Jagger pump, \$60 OBO; Gas motor for edging concrete walkways, \$50. 842-2510.

**Troy built "Horse"**, 21hp, 46in; truck cap for 8' bed, 233-7444.

**Small cafe table with 2 arm chairs**, back wrought iron lattice. \$60. 240-355-8866.

**11.5' aluminum v-shape row boat**, 2 wooden paddles, winter cover & some paint. \$350. 399-5777.

**1950 Hamilton Beach malt mixer**, #30 11482A, original wooden box; Brunswick Charger bowling ball, 16 lbs, black. 383-2178.

**'96 Mazda 626 LX**, 93,700 mi., new brakes, \$1800. 383-6405.

**Kar Kaddy**, heavy duty, spare tire, gravel deflector \$400. 575-6474 or 410-610-8978.

**River house**, Waccamaw River, 3 years old, boat dock and deck, 20 min from all beaches. 840-5326.

**Collapsible dog crate**, for dog up to 50 lbs, great for training, \$40; dog or cat carrier for medium sized dogs. \$25 OBO. 575-5028.

**Gold Tone 5 string Banjo**, model 250, Whyte Lady \$550; hand made violins, made in NC; many older violins and student violins, 842-8326.

## HOW TO SUBMIT YOUR AD

**SEE TOP FOR RULES. ADS MUST BE RECEIVED AT BEMC BY THE 10TH OF THE MONTH** for inclusion in the next month's issue. **SEND TO:** BEMC, ATTN Watts for Sale, PO Box 826, Shallotte NC 28459, FAX 910-755-4299 OR email to: [watts4sale@bemc.org](mailto:watts4sale@bemc.org).

Please include your BEMC account number or address. Each issue starts mailing around the 26th of the prior month (i.e., Jan. issue starts mailing on 12/26 thru 1/23). Each issue is also posted on [www.bemc.org](http://www.bemc.org) (What's New page) around the 26th of the month prior. Copies are also available in BEMC offices.