

Watts Cooking And Watts For Sale



FOR THE MEMBERS OF BRUNSWICK EMC

**BRUNSWICK
ELECTRIC** 
Membership Corporation

A Touchstone Energy® Cooperative 

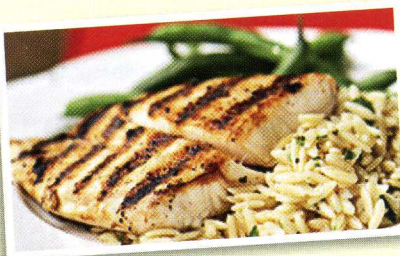
APRIL 2009

Pan-Grilled Snapper with Orzo Pasta Salad

- 1 ½ cups uncooked orzo (rice-shaped pasta)
- Cooking spray
- 4 (6-ounce) red snapper fillets
- ½ teaspoon salt, divided
- ¼ teaspoon black pepper, divided
- 1 ½ tablespoons minced shallots
- 1 tablespoon chopped fresh parsley
- 1 tablespoon fresh lemon juice
- 2 teaspoons orange juice
- 1 teaspoon Dijon mustard
- 2 ½ tablespoons extra virgin olive oil

Cook pasta according to the package directions, omitting salt and fat. Drain and keep warm. Heat a grill pan over medium-high heat. Coat pan with cooking spray. Sprinkle fish evenly with ¼ teaspoon salt and 1/8 teaspoon

pepper. Add fish to pan; cook 3 minutes on each side or until fish flakes easily when tested with a fork or until desired degree of doneness. Combine remaining ¼ teaspoon salt, remaining 1/8 teaspoon pepper, shallots, parsley, lemon juice, orange juice, and mustard in a small bowl, stirring well. Slowly add olive oil, stirring constantly with a whisk. Drizzle the shallot mixture over pasta; toss well to coat.

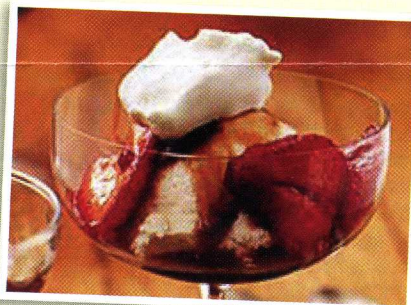


Pound Cake with Strawberry Balsamic Syrup

- 1/3 cup sugar
- 1/3 cup balsamic vinegar
- 1/3 cup dry red wine
- 1 ½ pints strawberries, quartered
- 4 (1/2-inch-thick) slices pound cake
- 1 (1-pint) container vanilla ice cream

Combine first 3 ingredients in a small saucepan over medium-high heat, and bring to a boil. Stir until sugar dissolves; continue to boil 6 minutes or until liquid is reduced to 1/3 cup. Place quartered berries in a medium bowl. Add warm balsamic mixture and toss gently. Cool to room temperature. Cover and chill

at least 1 hour, stirring well before serving. Place a piece of pound cake in the bottom of each of 4 bowls or glasses; top with about ½ cup berry mixture and ½ cup ice cream. Serve immediately.



**Tips to help you
save \$ and energy**

Saving Energy in the Kitchen:

- ▶ Clean refrigerator coils annually and switch your fridge's power-saver to "ON" if available.
- ▶ Set the refrigerator temperature to 34° - 37° F and the freezer to 0° - 5° F.
- ▶ Ensure that the refrigerator door gaskets seal tightly.
- ▶ Use a microwave or crockpot when possible instead of stovetop or oven.
- ▶ Remember to turn the kitchen exhaust fan off when you're done cooking.
- ▶ Let hot food cool before storing in the refrigerator
- ▶ Use cold water for rinsing dishes and for garbage disposal



Safety Tip

Flood Related Electrical Hazards:

- ▶ Never step into a flooded room if water may be in contact with electrical outlets, appliances or cords.
- ▶ Never attempt to turn off power at the breaker box if you must stand in water to do so. If you can't reach your breaker box safely, call your electric utility to shut off power at the meter.
- ▶ Never use electric appliances or touch electric wires, switches or fuses when you're wet or when you're standing in water.
- ▶ Keep electric tools and equipment at least 10 feet away from wet surfaces. Do not use electric yard tools if its raining or the ground is wet.
- ▶ If an electrical appliance has been in contact with water, have a professional check it out before it is used.

PLEASE NOTE:

BEMC offices will be closed on Monday, April 13 in observance of Easter.

WEBSITE:

E-MAIL:

OUTAGE REPORTING:

www.bemc.org

info@bemc.org

1-800-682-5309

CUSTOMER SERVICE:

Toll Free:

1-800-842-5871

Shallotte:

910-754-4391

Southport/Oak Island:

910-457-9808

Whiteville:

910-642-5011

Use the BPTs at these convenient locations to pay your electric bill or purchase energy for your PowerStat card:

24 hrs a day/ 7 days a week

BEMC Headquarters:

795 Ocean Hwy W (Hwy 17), Supply

BEMC Oak Island Office:

4335 Southport-Supply Rd (Hwy 211)

BEMC Whiteville Office:

2228 New Britton Hwy E (Hwy130)

NAKINA—Fowler's Supermarket

Hwy 904 / 6am-9pm Mon-Sat;

9am-9pm Sun

CHADBOURN—Hasty Mart

Hwy 410N / 24 hrs/ 7 days

WINNABOW—Handee Hugo, 6170

Ocean Hwy (Hwy17) / 6am-11pm / 7 days

SHALLOTTE—Scotchman (next to Wendy's on Hwy 130) / 24 hrs / 7 days

SUNSET BEACH—Market Express

1798 Seaside Rd / 7am-10pm / 7 days

Watts for Sale

And Watts Cooking
APRIL 2009

We're happy to provide this **FREE** service for BEMC members. **Please note the following:**

- FOR SALE ADS ONLY (no rentals, no items wanted, no commercial ads)
- ADS LIMITED TO THREE LINES (About 20 words), including telephone #
- We do not print email addresses or names.
- All ads run **ONE TIME ONLY, AS SPACE PERMITS** and are subject to editing.

- ONE AD PER MEMBER PER MONTH. NO REPEATS PLEASE!** May combine several items into one 3-line ad.
- Please print clearly and be sure to include your telephone number.
- See bottom of page for how to submit your ad.

FOR THE MEMBERS OF BRUNSWICK ELECTRIC MEMBERSHIP CORPORATION

'96 Maxium Sport Cuddy, 21 ft, t-top, 190 i/o Mercruiser, covers tandem axle trailer, extras, \$8,900 OBO. 754-9648.

Craftsman Aerator, 48" plug; Craftsman 48" lawnsweeper, \$150 each or \$275 both. 754-2064.

Tools, 10" table saw; circular saw; drill; router; alum tool box; hand gps; 4'x8' trailer; lots more. 579-5184.

Troy Bilt Tuffy tiller, 3.0 hp, new carburetor, model #12060, \$250 OBO. 754-5091.

'05 Ford Expedition XLT, 48K mi, \$14,000. 278-5402.

Coins, 2 GSA CC Morgans, \$300 each; 1910, 1909 Indian \$5 gold pieces, \$500 each; Round oak ball & claw table, \$450. 471-8833.

Boat, '00 18' Polar w/ '00 80 hp Yamaha 4 stroke outbd, magic tilt trailer, low hrs, \$5,500. 754-3315.

3BD/2BA doublewide, on 2.5 acres, carport, storage, pond, Green Swamp area, 842-9838.

'06 20' Bentley Pontoon boat, w/ trailer, 90 hp, 4 stroke Mercury, low hours, \$15,000. 948-2630.

Bistro set, 30" round table, 4 chairs w/ cushions, \$150. 399-5861.

Octagon aquarium, 75 gallon, w/ stand, \$25; Black shortbed truck cap, \$85. 846-0215.

2BD/1BA home, stick built, on 2 lots, new roof, carpet & paint, \$65,000. 754-6247.

Amish quilt, green/white 105x83, w/stand, \$600. 278-7274.

'04 Chevrolet Impala, 60k miles, white/blue int, \$5,995 OBO. 625-6168.

CKC Poodle puppies, 4 female, 1 male, ready March 12, black+black+white, \$400 & \$350. 653-3603.

Two lots, 13 Fairway at Land of Lakes Golf course, \$25,000 each, owner can finance, 816-6022/872-3011.

'68 Ford Mustang, convertible, 2 brl-289, red/black top, looks fair, drives good, needs restoration, \$6,000. 508-3830 or 754-2577.

2 Swivel Rattan chairs, palm tree pattern, \$50 each. 575-3436.

Old Country record albums, 60's & 70's original artists, \$5. each. 653-9279.

Windows, (13)Simonton new construction, made for vinyl siding, 2 picture size, 2 double sets, 5 single, 37.75x56.75, \$1,900. 579-4066.

Mink stole, \$100. 579-2883.

Two new 30 gal hot water heaters, \$75. each; Gas dryer, \$50. 278-5282.

'91 Boat, 15' Key West, center console w/40hp Evinrude motor, \$3,800; Golf cart, 2000 Club Car, gas, \$2,500. 842-1266.

Pack & Play bassinet, full bed ensemble, dark green/rose, \$75; dusty pink shag rug, 8x10, \$50; Antique dining table, 42x60, \$25. 648-4257.

Farmall Cub, Antique, 1949, new paint, 653-5011.

Meade 80x900 refrator telescope, w/ accessories, \$250; Orion 6" reflector telescope w/acc. \$325. 640-3638 after dark.

'84 Chevy RV motor home, 350, sleeps 6-8, good gas mileage, 653-3566.

Peacock eggs, April thru June, 508-7709.

'88 Harley Davidson, softail custom pearl orange, customized gas tank, fenders, \$11,000 neg. 646-3614.

Kubota, 68hp cab, 4wd w/loader. 640-7154.

Sofa, olive green, 96" long, deep cushions, \$400; Chest of drawers, black distressed, \$250; desk/chair, black distressed, \$200; swivel chair, \$75. 575-3767.

'90 Mazda Miata, 30+mpg, white convertible, new top, timing belt, struts, 124k miles, \$2900 OBO. 371-2467.

'00 Key West Boat, 2020CC, Mercury 125hp, very low hours, many options, no trailer, \$10,500. 575-4650.

Trundle Bed, oak, sleigh style, 2 mattresses, frame pops up for full bed, \$200 OBO. 846-4075.

'96 Yamaha Royal Star, garage kept, \$8000 OBO; 8 ft.Leonard custom truck cap for Chevy, \$800 OBO. 233-7444.

'07 Hyundai Sante Fe, very clean, basic model, < 15,000 miles, \$14,500 OBO, 575-5035.

Ladies Dress Form, Twin Fit, new, \$25. 371-6489.

'06 DD 4 horse Stock Trailer, Ex. \$5, 500; '04 Dodge Ram 1500, 64,910 miles, \$6,500. 287-5000.

Goldfish, pond raised, last years stock 3 to 5 inches long, \$3 and Koi \$5. 642-4725.

Small goats and Muscovy ducks, 754-6202.

Lasko 30" Oscillating Fan, on pedestal, 5 1/2' high, three speeds, on wheels, very low usage, cost \$100, you pickup for \$25. 579-5609.

Well irrigation pump, model STA-RITE 1 HP \$150 842-5589.

Coffee Table, 37 x 37 inch coffee table with four 14 x 14 glass panels. \$75. 253-0524.

'04 Komatsu WA180 Loader, 1,150 hours, quick attach coupler, bucket & forks, O.R.O.P.S. cab \$49,900. 843-213-3170.

Farmall 140 tractor, with fertilizer distributor, cultivators and disk \$4,000. 612-2831 or 575-4943.

'96 26 center console Grady White, Twin 225 Yamaha 2001, minimal hours, full curtains, new coaming pads, 2008 electronics. 336.689.6156.

Golden Retriever Puppies, champion lines, \$900. 336-441-0002.

4BD/3BA House, outside shower, tile and hardwood floors, sprinklers. Yacht dr. Oak Island, \$375,000. 704-576-2476.

'89 Lincoln, Mark 7, 68K mi, strong engine and transmission, located at Brunswick county airport. \$1200. 704-892-4430.

'07 Kingsport 30' Travel Trailer, Super Slide, 4 bunks, master bedroom, lots of storage, electric hitch, like new only asking payoff. 206-5604.

Honda 2.2 v-tech engine. 55000 miles, \$550 OBO, call after 12pm, 653-4680.

50 State Quarters, complete set "P" mint in custom folder, \$39.95. 579-4699.

Folding roll-away bed & mattress, \$75. 842-6015.

2.89 acres, Chadbourne, 1/2 cleared, perc approved for septic, \$10,000. 620-1957.

(2) Lots in Boiling Springs Lakes, 70X150 each on Statesville Rd. Side by Side both have been cleared and filled. \$20,000 each; Elvis Collectibles, 454-8193.

Delta 15" scroll saw, \$40. 457-9013.

Granite counter, cabinet, sink & faucet, never used, ideal for laundry room, wet bar, etc. 66" long, \$350 OBO, 269-3334.

New Holland Skid Loader, '93 Chevy Diesel pick up; '95 Lincoln Towncar; 18' Bayliner boat, motor & trailer, 654-3868.

4BD/4.5BA builder's home, ICWW, Holden Beach mainland, office, 2 master suites, \$749,000 OBO 619-3619 or 395-0511.

'78 Harley Davidson Electric Glide Motorcycle. \$8,500. 579-6258.

'07 Kawasaki, 1600 Nomad Motorcycle, showroom condition, garage kept, one owner, black & silver, all service records, \$9,500. 575-5055.

Graco baby stroller, w/infant car seat, new in box, \$125 firm, 287-3631.

Large variety books, linens, costume jewelry, mirrors, paintings, bar stools, needlework, craft kits, inexpensive, 575-6225.

Mortar mixer, pull behind, gas motor, \$1,500 OBO; '82 Honda 500 CBX, \$1,500 OBO, 843-392-0377.

'97 Subaru 4-dr sedan; low miles 109,000 and exceptionally clean; new timing belt, 201-1712.

3BD/2BA home, '07, Fleetwood Dr, Carolina Place, Southport, \$146,900, 523-0540

Brick home, w/ carport in Calabash Acres, community boat landing, biking, fishing pond, \$139,900. 575-6218.

'87 Ford Bronco II, 4x4, \$1,500 OBO; John Deere 876A side dis. hay rake, \$300; Pig hauling trailer, \$250; 3 dance studio mirrors, 6x10, \$300. 842-6634.

Broyhill 3 pc Attic Heirloom entertainment center, distress black 86Wx24Dx77H glass front side units, \$800; 4 panel Chinese screen 64x72 \$175. 754-2514.

Built in black dishwasher, \$150; over stove micro, \$50; white double kitchen sink, \$50. 477-0112.

Two five-drawer legal-width file cabinets, 60"H x 18"W x 26"D, green, \$125. 582-8399 or 616-1074.

'08 Riding mower, 38" twin blades, Bolens by MTD, 15.5 hp, used one season, \$600. 575-6534.

27" Ref-freezer, almond; brass head board & frame; ladies 10 spd bike; brass fire place set; silver fox jacket, med; 536-3480.

Ocean Ridge homesite, SummerHill Glen adjacent to Panther's Run Golf Course, corner lot, \$150,000. (802) 380-1335.

3BD/3.5BA Condo, Beacon Townes Carolina Shores Master BR 1st fl. new sun room, 1 car gar. new paint, etc. \$185,000. 575-7726.

'92 Yamaha Virago, 750, 8350 miles, \$2,000. firm. 575-3297.

Golf-Bushnell Pinseeker 1500 laser rangefinder, Tournament Edition, \$250 firm, 612-7700.

2 Pc Sectional, beige, \$450. 233-6707.

Ice cream/sherbet maker, Krups, one quart, never used, \$30. 383-0406.

Check out the new BEMC website...

still at www.bemc.org but with a fresh new look! You'll find Watts Cooking under the NEWSROOM tab but take a few minutes to browse around, especially the revolving home page stories and the ENERGY SAVERS section.

HOW TO SUBMIT YOUR AD

SEE TOP FOR RULES. ADS MUST BE RECEIVED AT BEMC BY THE 10TH OF THE MONTH for inclusion in the next month's issue. SEND TO: BEMC, ATTN Watts for Sale, PO Box 826, Shallotte NC 28459, FAX 910-755-4299 OR email to: watts4sale@bemc.org.

Please include your BEMC account number or address. Each issue starts mailing around the 26th of the prior month (i.e., Jan. issue starts mailing on 12/26 thru 1/23). Each issue is also posted on www.bemc.org (What's New page) around the 26th of the month prior. Copies are also available in BEMC offices.